



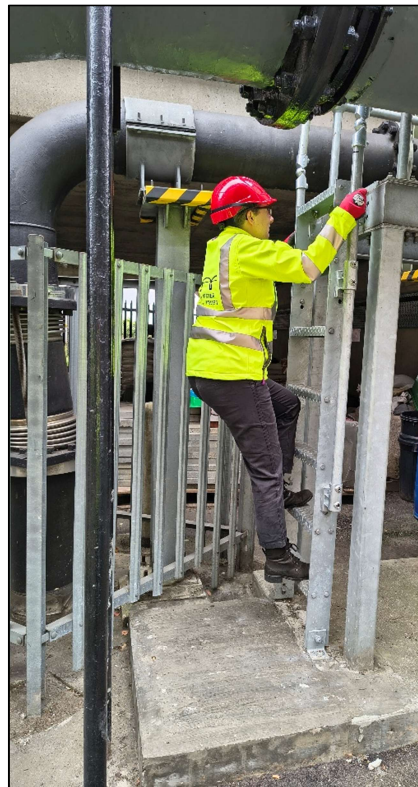
ROCHESTER BRIDGE TRUST

Hard Hat Tours – Access Guide

The following pages provide information on areas of the tour route, particularly changes in levels and headroom restrictions. This tour includes climbing down a short vertical ladder, going up and down steps and passing through an area with some restricted headroom. Please ensure that you are physically capable of doing so.

Be aware that areas around the bridge can be wet or muddy, particularly after heavy rain so please wear suitable clothing.

Vertical Ladder



Climbing up 7 steps of a vertical ladder from a short platform.



Limited Headroom



There is one area of limited headroom due to part of the structure, any persons over the height of 5 foot 6 inches will have to walk to one side.

Floor Grating



The tour route takes us along a walkway that is edged with grating. Through this grating you can see both the river and structure below.

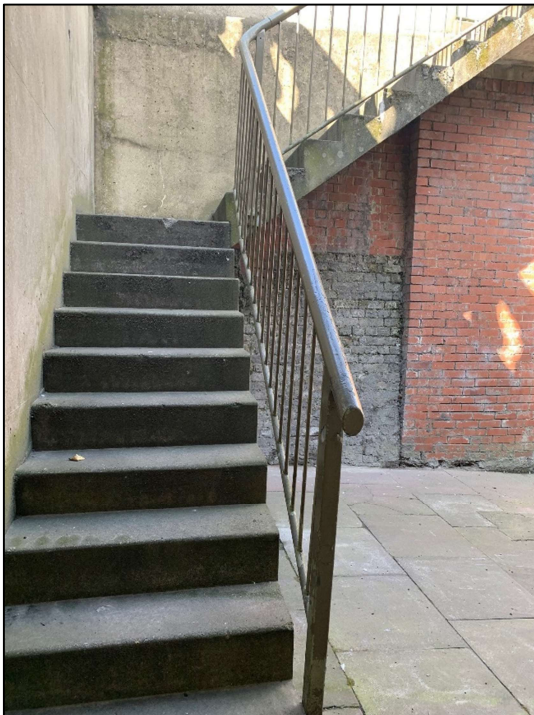


ROCHESTER BRIDGE TRUST

Steps



Along the tour route there are 16 steps down with handrails.



There are also 21 steps up with a single handrail.